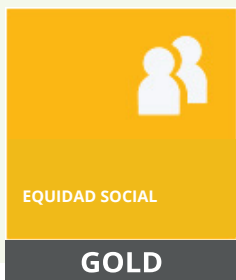


GRAPHENSTONE CRADLE TO CRADLE CERTIFIED™



“Graphenstone obtiene Cradle to Cradle Certified™, la distinción de producto más prestigiosa a nivel mundial.”

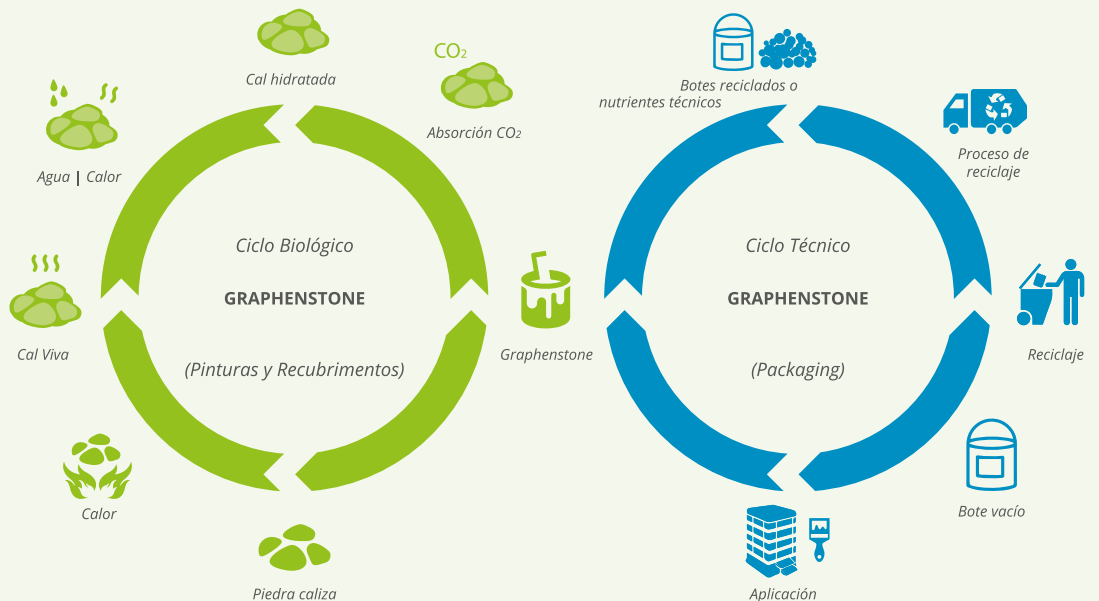
Graphenstone presenta materiales cuya materia prima, la cal, se obtiene por medios artesanales, ayudando a preservar la pureza, la densidad, los beneficios y propiedades de la piedra caliza. Los beneficios del uso de la cal pura son: transpirable, bactericida, fungicida y repelente de insectos. También contiene grafeno, un componente nanotecnológico fabricado a través de la deposición de gas, lo que mejora las propiedades de flexibilidad, dureza y conductividad térmica.

Graphenstone Ecosphere (pintura interior blanca)
Graphenstone Biosphere (pintura exterior blanca)
Graphenstone Filler (FillerIn y FillerOut)

RESUMEN DE OPTIMIZACIÓN DE PRODUCTOS
Cradle to Cradle Certified™ Banned List compatible con la estrategia Material Health (Salud del material) no se requiere.
No hay exposición de carcinógenos, mutágenos ni tóxicos reproductivos.
Cumple con los requisitos de pruebas de emisiones de COV.

Producto totalmente optimizado - no contiene ningún GRIS o productos químicos evaluado-X.
* Proceso de productos químicos han sido identificados y ninguno es gris o evaluado-X.

Tabla de Puntuación Cradle to Cradle Certified	
SALUD DEL MATERIAL	Gold
REUTILIZACIÓN DEL MATERIAL	Gold
ENERGÍA RENOVABLE Y GESTIÓN DE CARBONO	Gold
ADMINISTRACIÓN DEL AGUA	Platinum
EQUIDAD SOCIAL	Gold
NIVEL DE CERTIFICACIÓN GENERAL	Gold



Cradle to Cradle Certified™ GOLD

Además de los requisitos de nivel de plata, todos los productos certificados de ORO bajo la Versión 3.0 deben cumplir los siguientes requisitos:

Salud de los materiales

- El producto ha sido evaluado 100% (en peso), las calificaciones A, B, C. Todos los países de mercados emergentes han sido evaluados como no-X.
- El producto no contiene materiales evaluados X (no se requiere la estrategia de optimización).
- El producto cumple con las normas de emisiones C2C.

Reutilización de materiales

- El producto tiene un índice de material de Reutilización igual o superior ≥ 65 .
- El fabricante ha completado una estrategia de "manejo de nutrientes" para el producto, incluyendo el alcance, cronograma y presupuesto.

Energía Renovable y Gestión de Carbono

- Para la etapa final de fabricación del producto, el 50% de la electricidad empleada es de fuentes renovables o compensada con proyectos de energía renovable, y el 50% de energía directa es compensada en sus emisiones.

Administración del agua

- Los químicos relacionados con el proceso del producto en el efluente se optimizan (los productos químicos identificados como problemáticos se mantienen y fluyen en los sistemas de recuperación de nutrientes; los efluentes que dejan las instalaciones no contienen productos químicos evaluados como problemáticos).

ó

- Progreso demostrado en la estrategia desarrollada por los requisitos de nivel de plata (requerido para instalaciones con ningún producto efluente aplicable).

Equidad Social

- Completar dos de los requisitos de Nivel Plata: Auditoría específica y / o sobre temas específicos material o certificación correspondiente a un mínimo del 25% del material del producto en peso debe ser completa (Certificada FSC, comercio justo, etc.).

ó

- Cuestiones sociales relevantes de la cadena de suministro están completamente investigadas y se desarrolla una estrategia de impacto positivo.

ó

- La compañía está llevando a cabo activamente un proyecto social innovador que tiene un impacto positivo en las vidas de los empleados, la comunidad local, la comunidad mundial, los aspectos sociales de la cadena de suministro del producto, o el reciclado / reutilización.



"Graphenstone elimina el concepto de residuo y se convierte en un producto con un ciclo de vida íntegramente verde."

MINIMIZAR

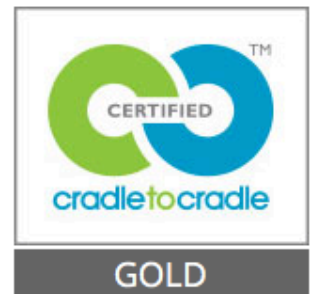
GRAPHENSTONE cumple con la filosofía de Reutilizar, Reducir y Reciclar.

REFORMULAR

GRAPHENSTONE utiliza materiales más eficientes.

Más información:
<http://www.c2ccertified.org/>

Graphenstone indoor and outdoor paint (only white color) and filler



INDUSTRIA ESPAÑOLA PARA EL DESARROLLO E INVESTIGACIÓN SA (IEDISA)



Renewal date 15 February 2018

Manufacturer Description

Graphenstone presents materials whose raw material, lime, is obtained by artisanal means, helping to preserve the purity, density, the benefits and properties of limestone.

The benefits of using the purest Lime: breathable, antibacterial, antifungal and insect repellent. It also contains graphene, a nano component manufactured through gas deposition, which enhances properties of flexibility, hardness, and thermal conductivity.

Graphenstone indoor paint (white)
Graphenstone outdoor paint (white)
Graphenstone Filler

Packaging is assessed and meets Basic level requirements

Graphenstone indoor and outdoor paint (only white color) and filler



Material
Health

GOLD

INDUSTRIA ESPAÑOLA PARA EL DESARROLLO E INVESTIGACIÓN SA (IEDISA)



Renewal date 15 February 2018

Manufacturer Description

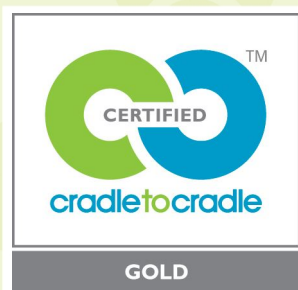
Graphenstone presents materials whose raw material, lime, is obtained by artisanal means, helping to preserve the purity, density, the benefits and properties of limestone.

The benefits of using the purest Lime: breathable, antibacterial, antifungal and insect repellent. It also contains graphene, a nano component manufactured through gas deposition, which enhances properties of flexibility, hardness, and thermal conductivity.

Graphenstone indoor paint (white)
Graphenstone outdoor paint (white)
Graphenstone Filler

Packaging is assessed and meets Basic level requirements

LICENSED MARKS:



Cradle to Cradle Certified™ Gold

THE LICENSED MARKS IDENTIFIED ABOVE MAY BE LICENSED TO:

Industria Española para el Desarrollo e
Investigación SA (IEDISA)

FOR THE BELOW LISTED CERTIFIED PRODUCTS ASSOCIATED WITH THE NAME:

Graphenstone indoor and outdoor paint
(only white color) and filler

A handwritten signature in black ink that reads "Lewis B. Perkins".

Cradle to Cradle Products Innovation Institute

ISSUE DATE

16 February 2016

CERTIFICATION #

2788

EXPIRATION DATE

15 February 2018

LEAD ASSESSMENT BODY:
Eco Intelligent Growth



MATERIAL HEALTH ASSESSMENT BODY:
Arche Consulting

Only the following products are considered Certified Product(s)
within the scope of this certification and the associated
Trademark License Agreement:

Graphenstone indoor paint (white)
Graphenstone outdoor paint (white)
Graphenstone Filler

Packaging is assessed and meets Basic level requirements



Graphenstone indoor and outdoor paint (only white color) and filler

ISSUED TO Industria Española para el Desarrollo e Investigación SA (IEDISA)

STANDARD 3.1

EXPIRES 15 February 2018

LEAD ASSESSMENT BODY

Eco Intelligent Growth

MATERIAL HEALTH ASSESSMENT BODY

Arche Consulting

ASSESSED APPLICATIONS

Manufacturing: Mixing; Filling; Use: Application by professionals; Paint for indoor and outdoor use; End-of-Life: Recycling; Landfill

PRODUCTS COVERED

- Graphenstone indoor paint (white)
- Graphenstone outdoor paint (white)
- Graphenstone Filler

Packaging is assessed and meets Basic level requirements

PRODUCT OPTIMIZATION SUMMARY

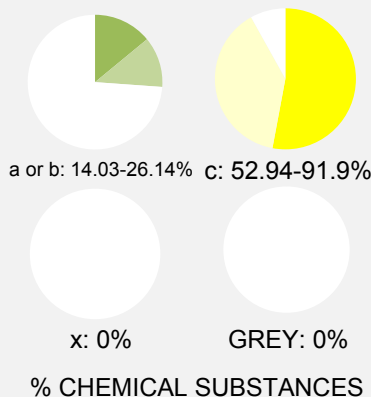
- Cradle to Cradle Certified*TM Banned List compliant
- Material Health optimization strategy not required
- No exposure from carcinogens, mutagens, or reproductive toxicants
- Meets VOC emissions testing requirements
- Product is fully optimized - does not contain any GREY or x-assessed chemicals
- Process chemicals have been identified and none are GREY or x-assessed

PERCENTAGE OF CHEMICAL SUBSTANCES ASSESSED BY WEIGHT

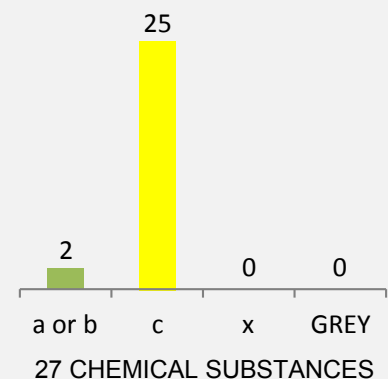
100%

Inventory threshold for chemicals in each material = 100 ppm

ASSESSMENT RATINGS BY WEIGHT



PRODUCT OPTIMIZATION



Material Health Certificate Guide

The Material Health Certificate is awarded to products assessed against the requirements in the Material Health category of the *Cradle to Cradle Certified™* Product Standard. The Material Health achievement level (Basic, Bronze, Silver, Gold, or Platinum) is shown in the certificate's upper right corner. A Material Health Certificate does not indicate that a product is *Cradle to Cradle Certified™*, which requires assessment against all five Standard categories.

The *Cradle to Cradle Certified™* Material Health Assessment Methodology is a contextual assessment based on chemical hazard identification and qualitative exposure considerations during a product's final manufacture, use, and end-of-use. The exposure assessment is highly simplified and more conservative compared to a conventional, quantitative risk assessment.

Definitions of Administrative Fields

Field	Definition
Issued To	Company that sells the assessed product(s).
Assessed By	Accredited Assessment Body responsible for conducting the product assessment.
Expires	Date the certificate expires. Certificate renewal is required biennially.
Standard	Version of the Standard (Material Health subsection only) the product was assessed against.
Assessed Scenarios	Use and end-of-use scenarios that the assessor considered in the exposure portion of the Material Health assessment. Assessment results are only valid for these scenarios.
Products Covered	Products included in the scope of the certificate. Certificates may cover multiple product variations.

Definitions of Product Optimization Summary Fields

***Cradle to Cradle Certified™* Banned List compliant**

The product's materials are not known to contain chemicals on the Banned Lists of Chemicals above permitted thresholds.

Material Health optimization strategy developed

Plan developed to phase out x assessed chemicals and assess GREY content.

No exposure from carcinogens, mutagens, or reproductive toxicants

Assessed materials do not contain carcinogens, mutagens, or reproductive toxicants with plausible exposure routes.

Meets VOC emissions testing requirements

The product meets the volatile organic compound (VOC) emissions testing requirements described in the Standard.

Does not contain any GREY or x-assessed chemicals; product is fully optimized

The product's materials contain chemicals with only a, b, or c risk ratings (no GREY or x). (Note: In the *Cradle to Cradle Certified™* Material Health Assessment Methodology, chemicals in each material are assigned a, b, c, x, or GREY risk ratings. Each material is then assigned an A, B, C, X, or GREY final assessment rating based on the risk ratings of its constituent chemicals. The following table explains the rating system.)

a or b (A or B)	Optimal
c (C)	Moderately problematic, but acceptable for use
x (X)	Highly problematic; targeted for phase out
GREY	Considered unassessed due to unknown identity or lack of toxicity information

Process chemicals have been identified and none are GREY or x-assessed

All process chemicals have been assessed and received an a, b, or c risk rating (no x-assessed or GREY).

Percentage Assessed by Weight

For single-material products, the cumulative percentage of assessed chemicals (a, b, c, and x). For other products, the cumulative percentage of assessed materials (A, B, C, and X). When a certificate represents a group of products, a percent range is shown.

Assessment Ratings by Weight

For single-material products, the percentage of a or b (shown in green), c (shown in yellow), and x (shown in red) assessed chemicals. For other products, the percentage of A or B (shown in green), C (shown in yellow), and X (shown in red) assessed materials. When a certificate represents a group of products, percent ranges are shown.

Product Optimization

Number of materials (or chemical substances for single-material products and multi-material product groups with uncountable color variations) assigned each assessment rating.